



# NAPOLI 5-7 MAGGIO 2015



*A peculiar aspect of treatment in Cushing's disease:  
Pasireotide between present and future*

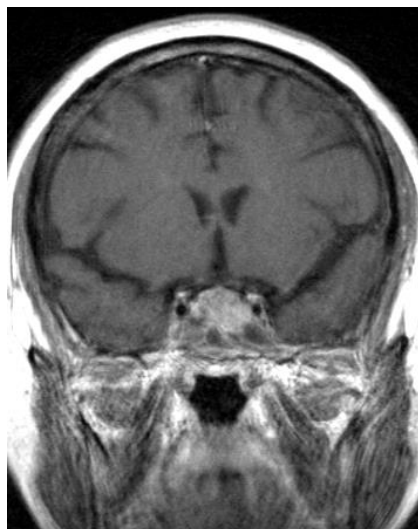
**ROUND TABLE PASIREOTIDE AND REAL WORD EVIDENCE:  
Messina Experience: The impact on co-morbidities**

**Adriana Albani e Salvo Cannavò**

Dipartimento di Medicina Clinica e Sperimentale  
Università di Messina

## Clinical management of critically ill patients with Cushing's disease due to ACTH-secreting pituitary macroadenomas: effectiveness of presurgical treatment with pasireotide

S. Cannavo<sup>1</sup> · E. Messina<sup>1</sup> · A. Albani<sup>1</sup> · F. Ferrau<sup>1</sup> · V. Barresi<sup>2</sup> · S. Priola<sup>3</sup> · F. Esposito<sup>3</sup> · F. Angileri<sup>3</sup>

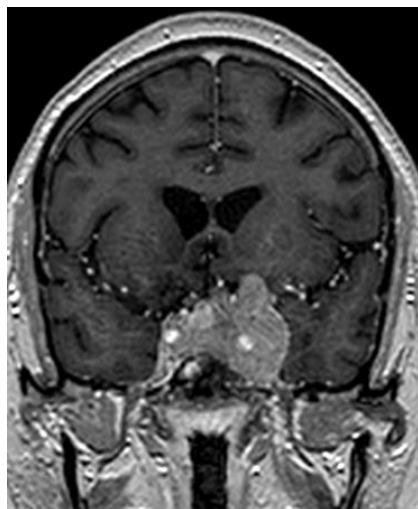


♀, 55 aa

**ACTH: 416 pg/ml**

**Cortisolo: 553 ng/ml**

**UFC: 4936 µg/24 h**



♂, 35 aa

**ACTH: 351 pg/ml**

**Cortisolo: 634 ng/ml**

**UFC: 6188 µg/24 h**

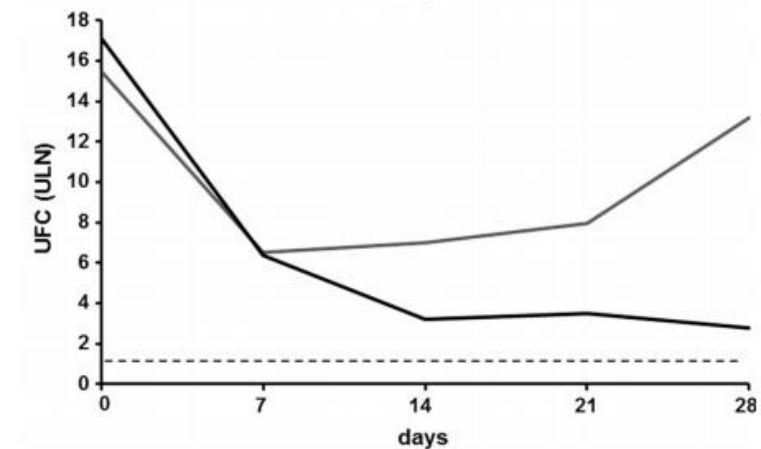
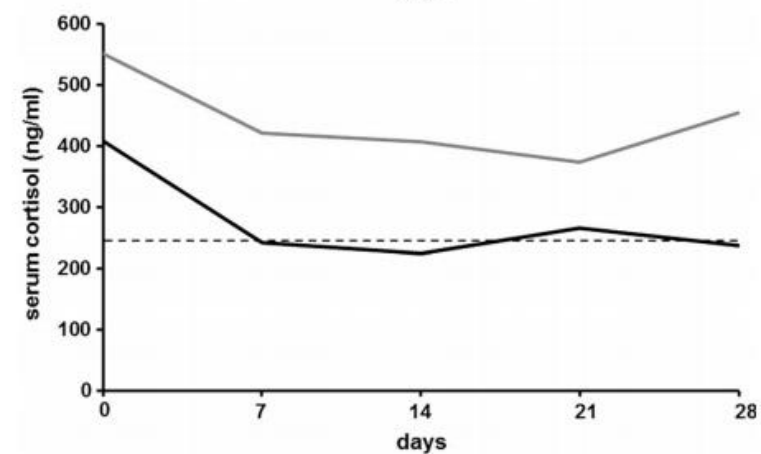
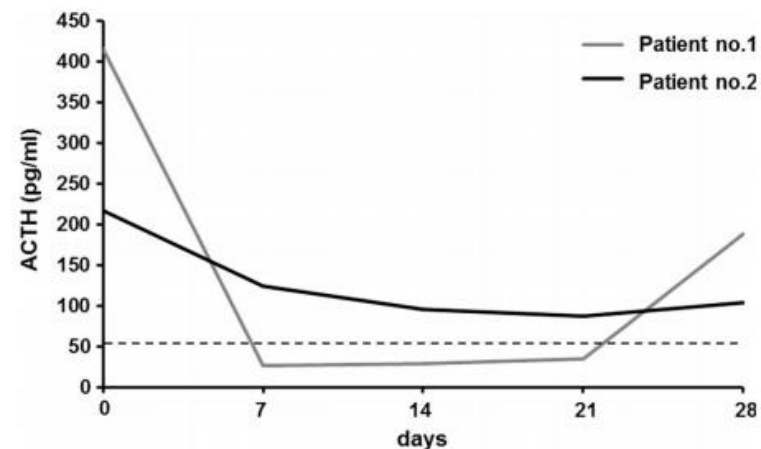
**PRL: 3,4 ng/ml**

**IGF-1: -2.9 sds**

**TSH: 0.4 mU/L**

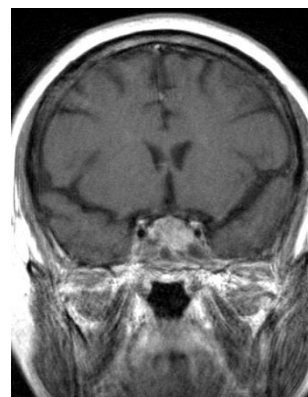
**FT4: 7,8 pmol/L**

**Testosterone: 60.8 ng/dl**

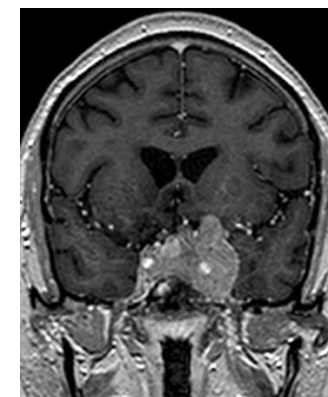


## Clinical management of critically ill patients with Cushing's disease due to ACTH-secreting pituitary macroadenomas: effectiveness of presurgical treatment with pasireotide

S. Cannavo<sup>1</sup> · E. Messina<sup>1</sup> · A. Albani<sup>1</sup> · F. Ferrau<sup>1</sup> ·  
V. Barresi<sup>2</sup> · S. Priola<sup>3</sup> · F. Esposito<sup>3</sup> · F. Angileri<sup>3</sup>



♀, 55 aa



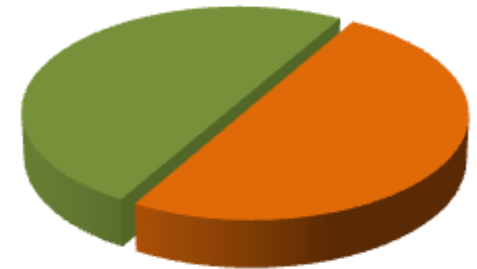
♂, 35 aa

	Patient no. 1				Patient no. 2			
	Baseline	Pasireotide treatment			Baseline	Pasireotide treatment		
		3rd day	7th day	21st day		3rd day	7th day	21st day
Plasma ACTH h. 8 (pg/ml)	416	87	26.9	35.2	218	119	125	88
Serum cortisol h. 8 (ng/ml)	553	486	422	375	409	286	242	267
UFC (x ULN)	15.4	–	6.5	7.9	17.1	–	6.4	3.5
Na <sup>+</sup> (mEq/L)	147	140	139	141	148	146	141	143
K <sup>+</sup> (mEq/L)	2.1* <sup>#</sup>	3.4 <sup>#</sup>	4.2	3.9	2.4* <sup>#</sup>	3.8 <sup>#</sup>	4.4	3.8
Ca <sup>2+</sup> (mmol/L)	0.6	0.9	1.1	1.1	1.1	1.1	1.2	1.2
P <sup>+</sup> (mg/dL)	2.4	4.5	4.3	4.3	3.1	3.0	3.8	3.5
pH	7.64	7.40	7.42	–	7.48	7.43	7.40	–
pO <sub>2</sub> (mmHg)	53.0	84.2	98.0	–	78.2	84.5	93.4	–
SO <sub>2</sub> (%)	90	94	95	–	94	97	97	–
pCO <sub>2</sub> (mmHg)	46.5	41.2	38.2	–	48.0	35.2	38.0	–
HCO <sub>3</sub> <sup>-</sup> (mEq/L)	48.7	28.0	27.4	–	36.0	20.4	24.8	–
SBP/DBP (mmHg)	200/110 <sup>a</sup>	160/90 <sup>a</sup>	140/80 <sup>a</sup>	140/90 <sup>b</sup>	180/120 <sup>c</sup>	150/90 <sup>d</sup>	130/80 <sup>d</sup>	120/65 <sup>d</sup>
FGL (mg/dL)	96 <sup>e</sup>	416 <sup>e</sup>	219 <sup>f</sup>	109 <sup>f</sup>	103	164 <sup>f</sup>	169 <sup>f</sup>	127 <sup>f</sup>

Pz	età	sesso	Età alla diagnosi	ADENOMA	TNS	RTx	TM	ADx	Pasireotide	
									Durata terapia	Dose
1	51	F	47	micro	2010	-	-	-	18 mesi	900 bid
2	49	F	34	micro	1998	-	ketoconazolo (EA)	sn	24 mesi	600 bid
3	25	M	22	micro	2011	-	-	-	20 mesi	600 bid
4	44	F	33	micro	2002	2003	ketoconazolo (resistenza)	dx	9 mesi	600 bid
5	34	M	34	macro	2014	-	-	-	9 mesi	600 bid
6	64	M	39	micro	1990 / 1995	-	ketoconazolo	-	6 mesi	600 bid

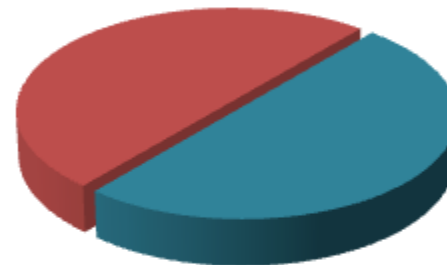
M/F	1:1
Età media alla diagnosi	31,8 (± 2,4 ED)
Età attuale	43,2 ( 6,6 ED)
Micro/macro	5:1 (83%)
TNS	6/6 (100%)
RTx	1/6 (17%)
TM	3/6 (50%)
ADx	2/6 (33%)

- normopeso
- obesità grado I
- obesità grado III

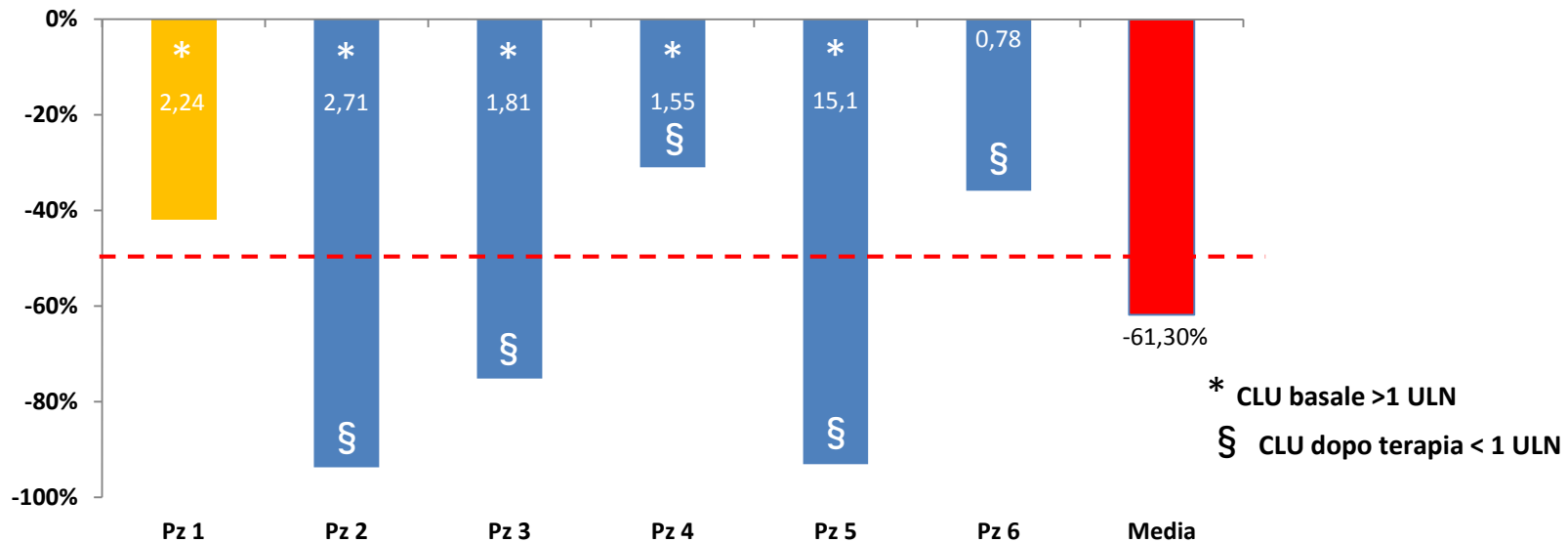
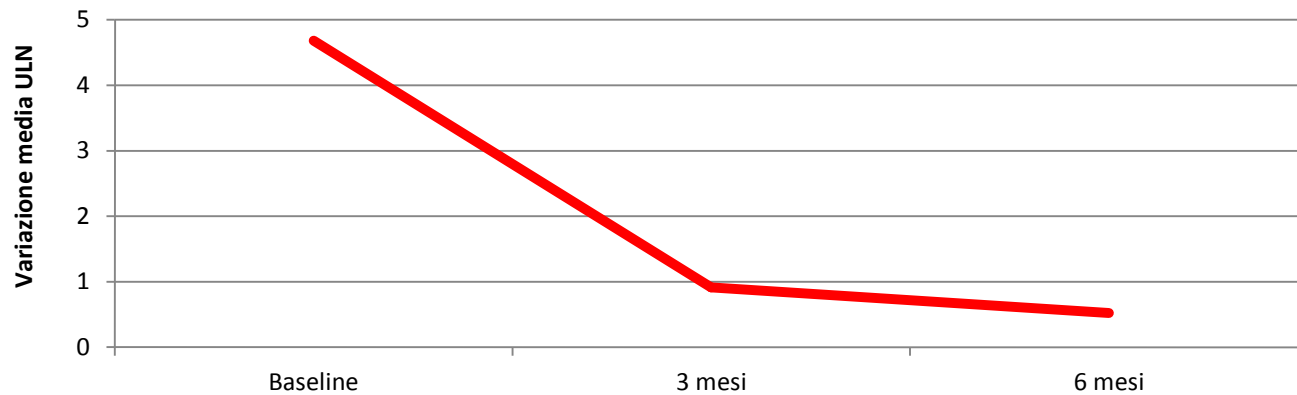


- diabete/IGT
- normale metabolismo glucidico

- ipertensione
- normale controllo pressorio

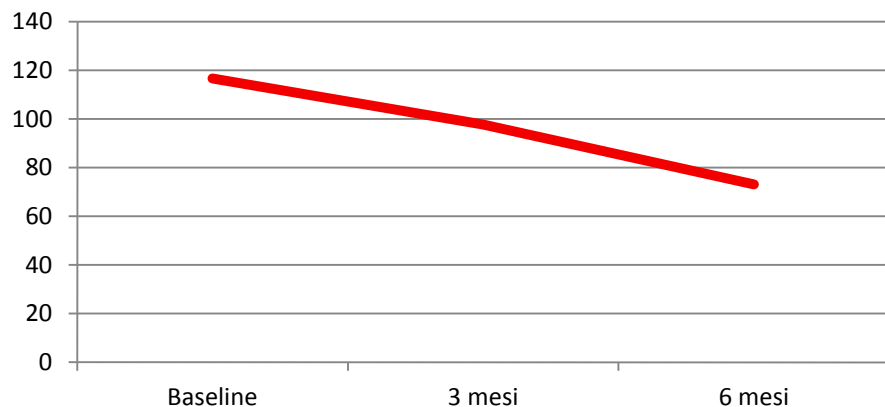


# Variazione del cortisolo libero urinario durante terapia con pasireotide

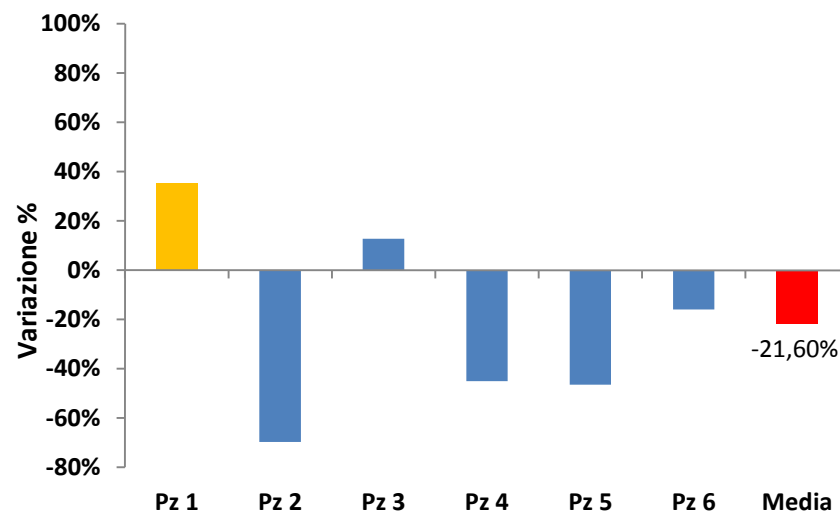
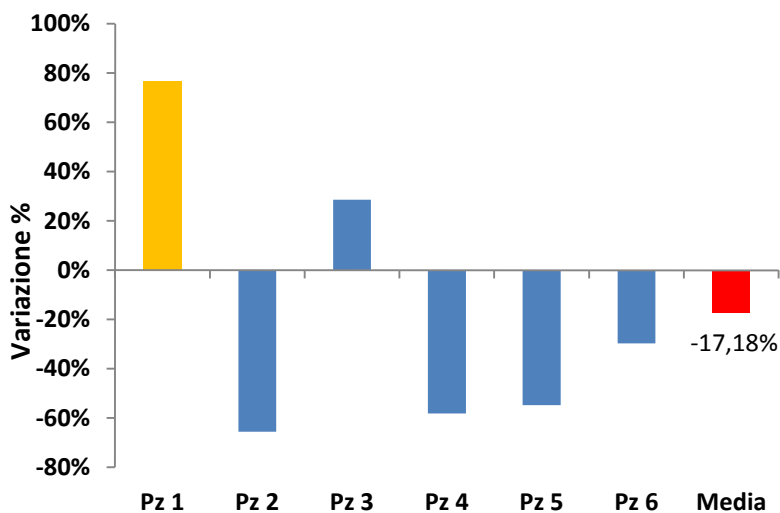
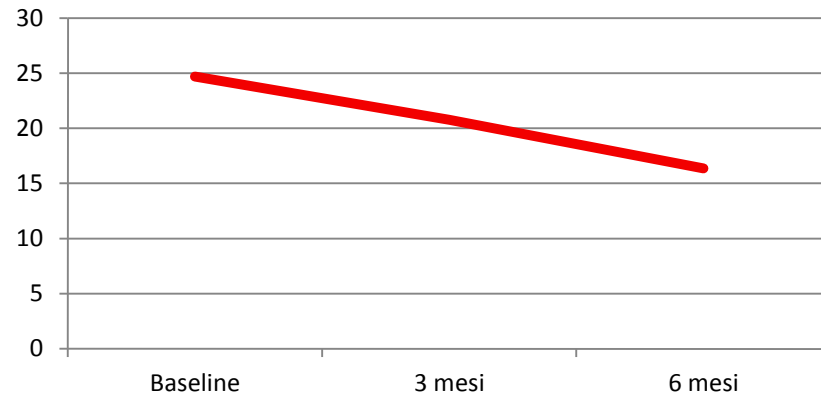


# Variazione delle concentrazioni ematiche di ACTH e cortisolo durante terapia con pasireotide

ACTH (pg/ml)

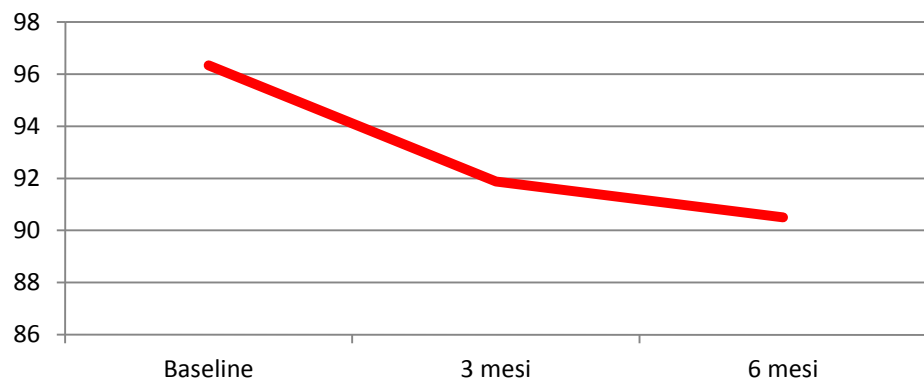


Cortisolo (mcg/dl)

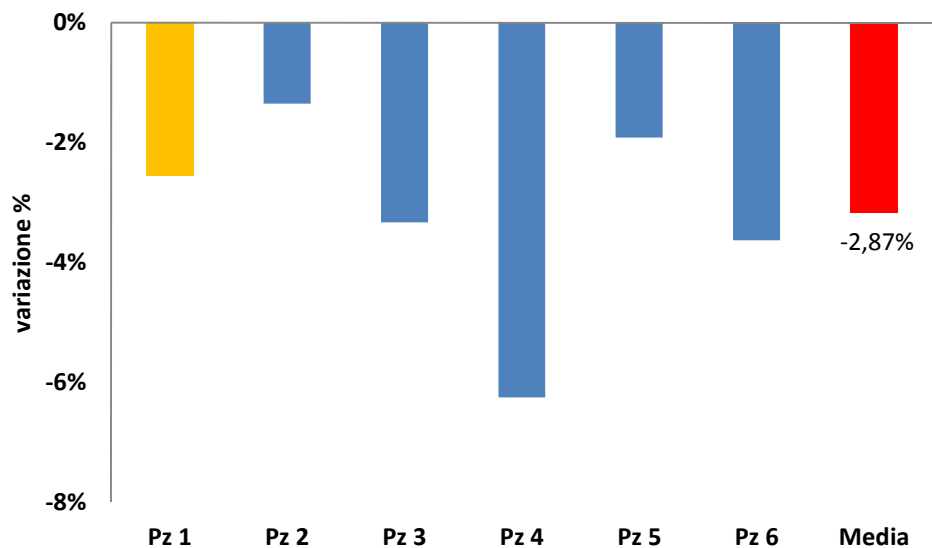
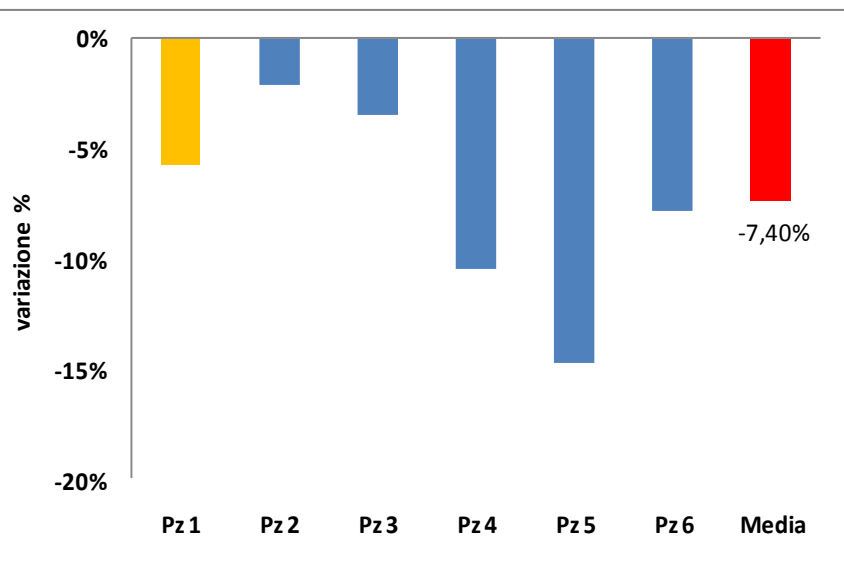
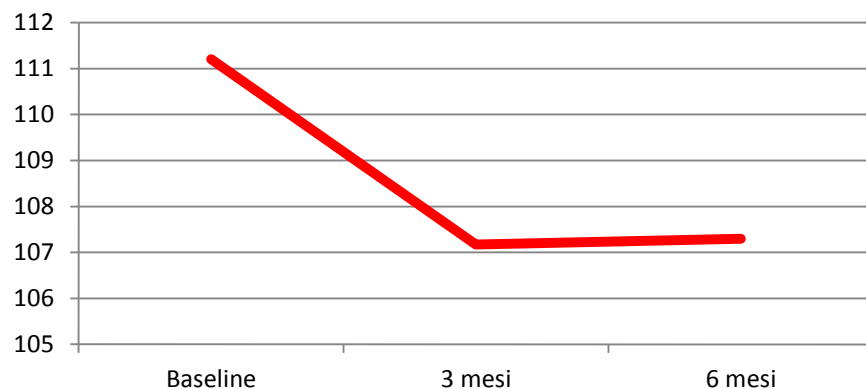


# Variazione ponderale durante terapia con pasireotide

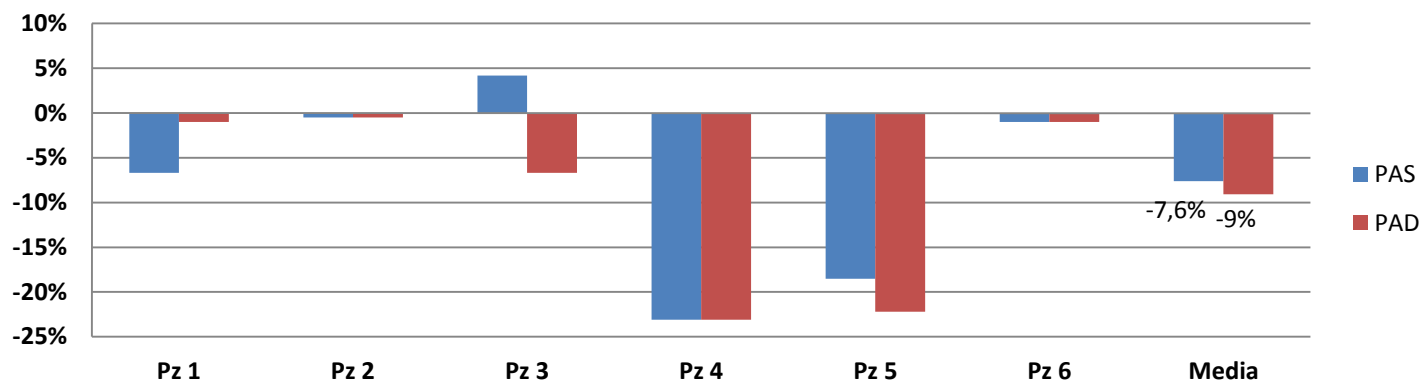
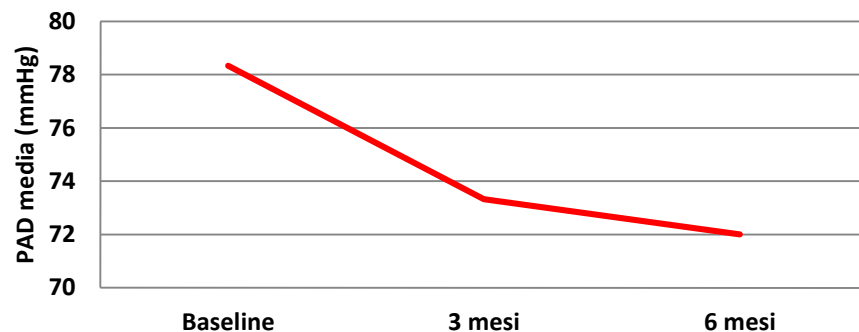
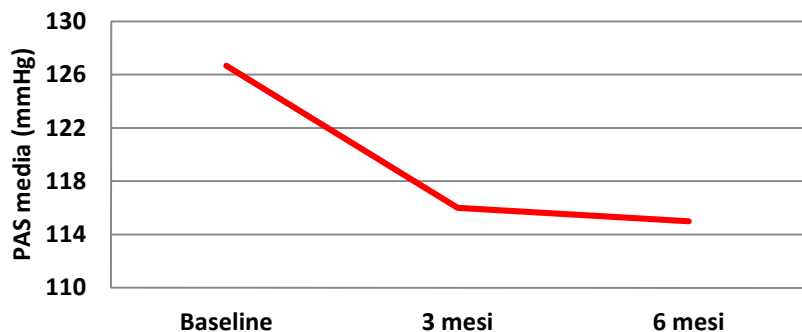
Peso medio (kg)



CV media (cm)



# Variazione pressione arteriosa durante terapia con pasireotide

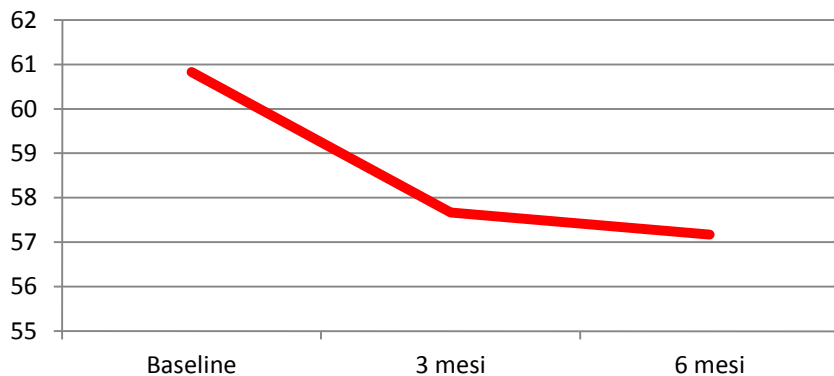


Ipertensione	X			X	X	X
<b>Terapia pre-pasireotide</b>	-valsartan -carvedilolo -manitidina			-amlodipina	-canrenoato -nebivololo	-olmesartan -amlodipina
<b>Terapia durante pasireotide</b>	Invariata			Invariata	Invariata	Invariata

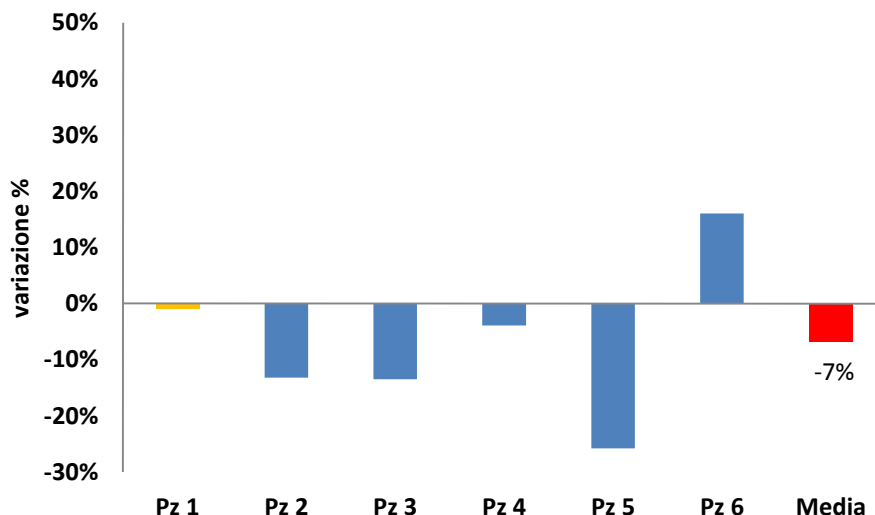
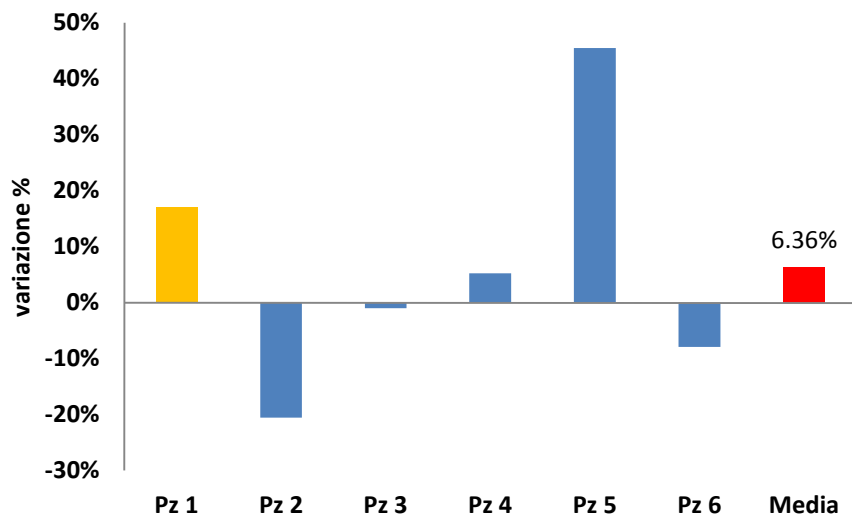
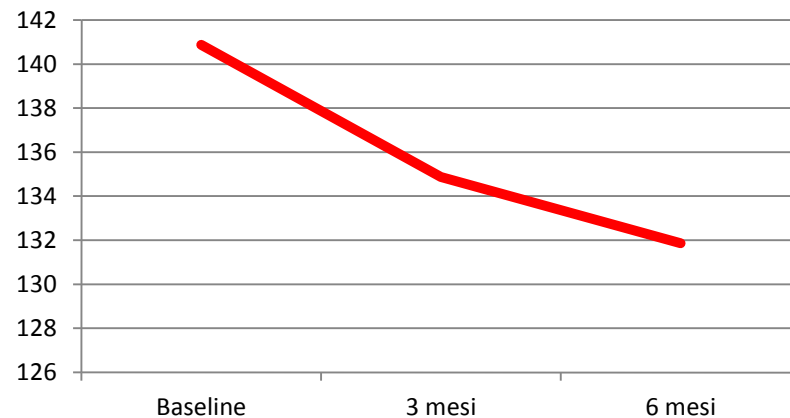


# Variazione profilo lipidico durante terapia con pasireotide

Colesterolo HDL medio (mg/dl)



Colesterolo LDL medio (mg/dl)



# Variazione profilo glicemico durante terapia con pasireotide

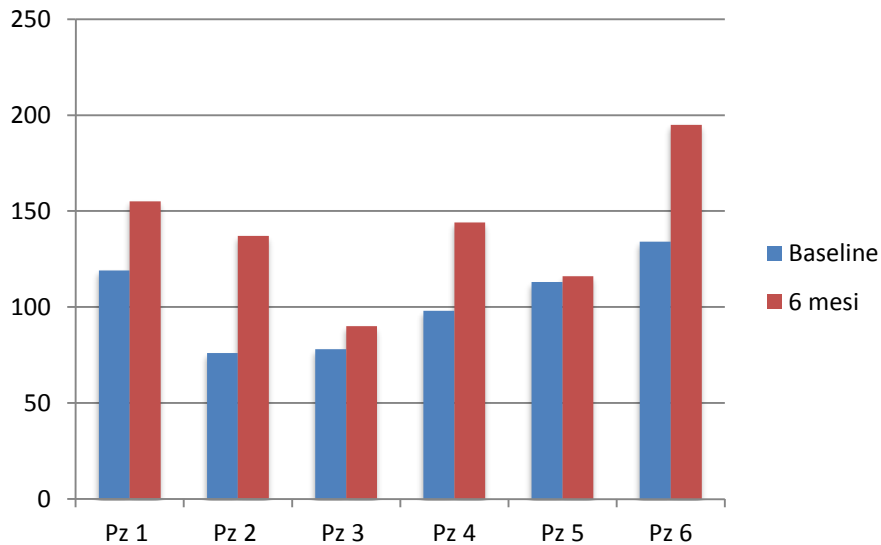
Pz	età	sesso	PRE-PASIREOTIDE	
			DM / IGT	Terapia praticata
1	51	F	DM	Metformina (2 g/die)
2	49	F	-	-
3	25	M	-	-
4	44	F	-	-
5	34	M	DM	Insulina Basal Bolus
6	64	M	DM	Metformina (1 g/die)

# Variazione profilo glicemico durante terapia con pasireotide

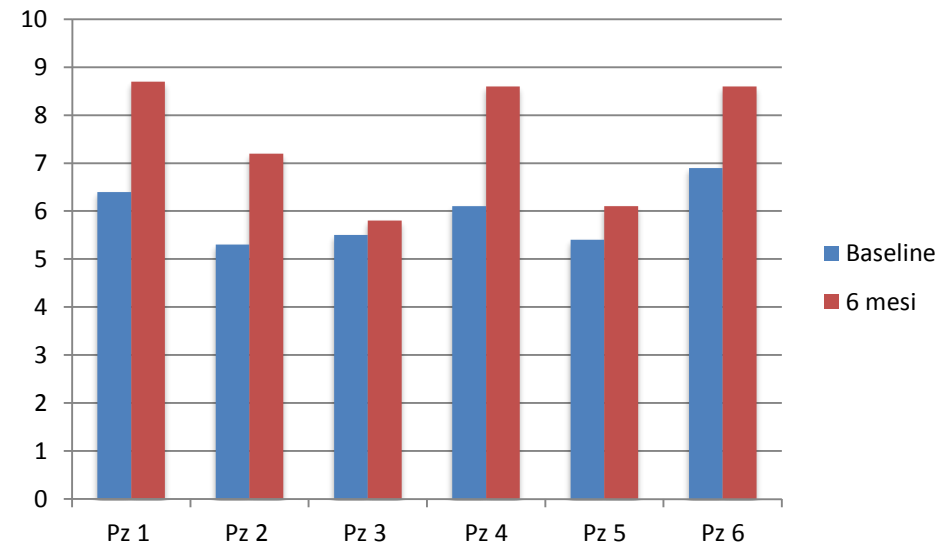
Pz	età	sesso	PRE-PASIREOTIDE		DURANTE PASIREOTIDE				
			DM / IGT	Terapia praticata	GLICEMIA MAX (mg/dl)	HbA1c MAX (%)	IPOGLICEMIZZANTI ORALI	INSULINA	INCRETINO-MIMETICI
1	51	F	DM	Metformina (2 g/die)	155	9	Acarbosio (150 mg/die)	Insulina basale/ Insulina basal bolus	Liraglutide (1.2 mg/die)
2	49	F	-	-	137	7.5	-	-	Vildagliptin (100 mg /die)
3	25	M	-	-	90	6.1	-	-	-
4	44	F	-	-	144	8.6	Metformina (2.5 g/die)	-	Vildagliptin (100 mg/die)
5	34	M	DM	Insulina Basal Bolus	171	6.4	Metformina (1.5 g/die)	-	-
6	64	M	DM	Metformina (1 g/die)	259	8.6	Metformina (2.5 g/die)	Insulina basale/Insulina basal bolus	Liraglutide (1.2 mg/die)

# Variazione profilo glucidico durante terapia con pasireotide

Glicemia mg/dl

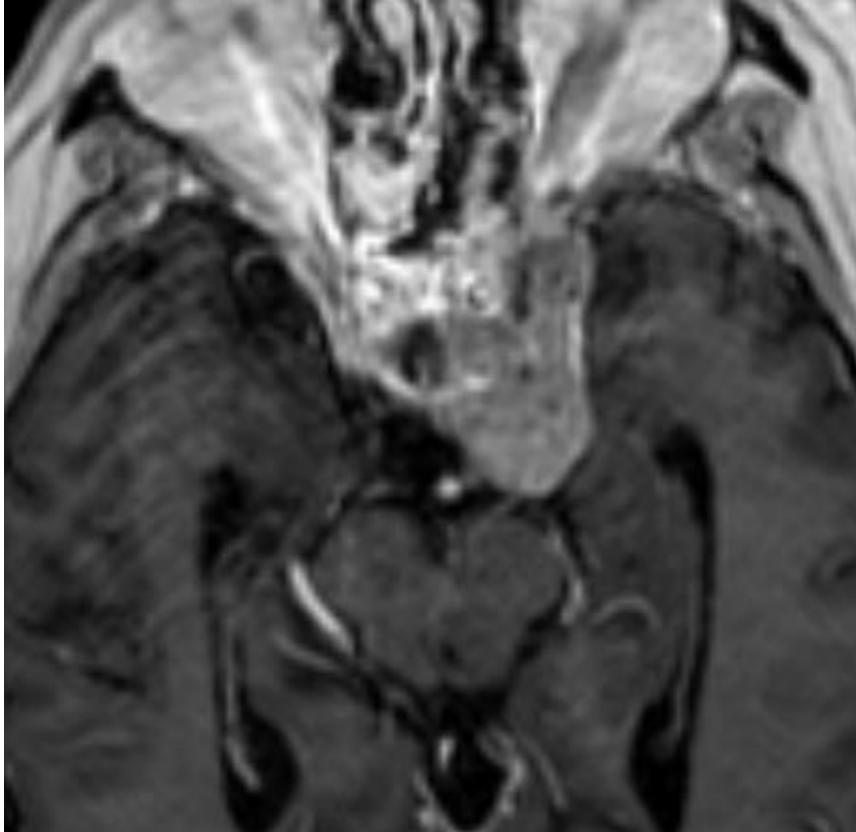


HbA1c (%)

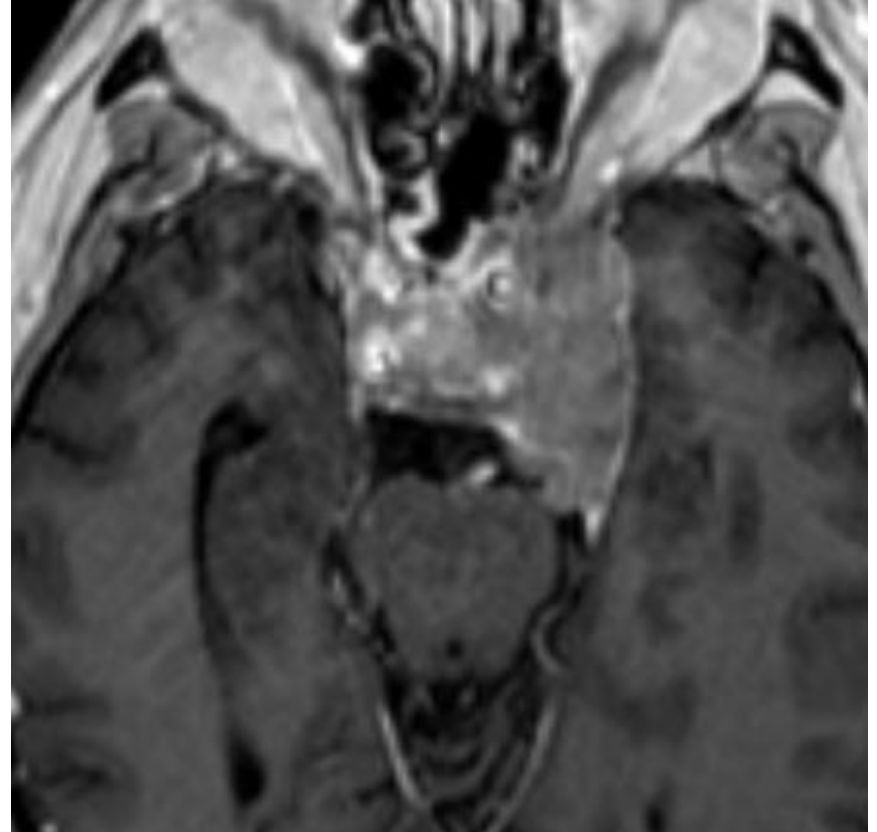


Pz 5 ♂, 35 aa

15/03/2015



3/07/2015



# Grazie ...



ML Torre   S Puglisi   O Cotta   M Ragonese   F Ferràù   PD Romeo



E Messina



A Albani

